



SPITFIRE DOORS



THE ART OF PERFECTION

S-700 PIVOT DOORS

WELCOME TO SPITFIRE DOORS,
THE WORLD'S MOST EXCLUSIVE
COLLECTION OF LUXURY
RESIDENTIAL ENTRANCE DOORS.

PIVOTS. DOORS WITH ATTITUDE

Pivot doors are wider and taller by design. Their sheer scale allows you to be creative when designing an awesome entrance to your property.

The inherent strength of our pivot door frame combined with our clever pivot mechanism means that a Spitfire pivot door is capable of carrying heavy external finishes like laminated glass or wood, with ease.

Our hi-security pivot doors which have been independently tested, can be installed either externally or internally, often used to protect 'safe rooms'.

Pivot Doors are definitely 'on trend' and always create a stunning first impression.



SPITFIRE
DOORS

THE ART OF PERFECTION

"The details are not the design,
they make the design."
- Charles Eames



1002



1001



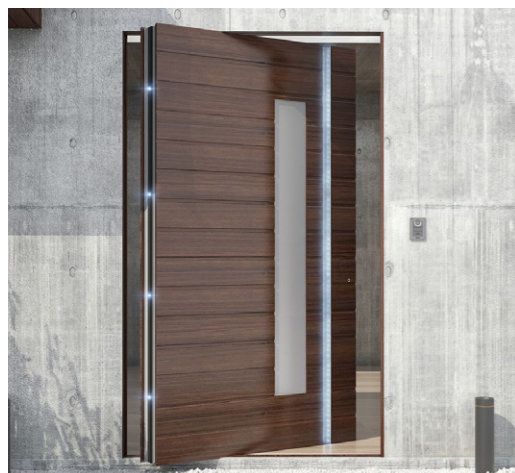
1003



1010



1003



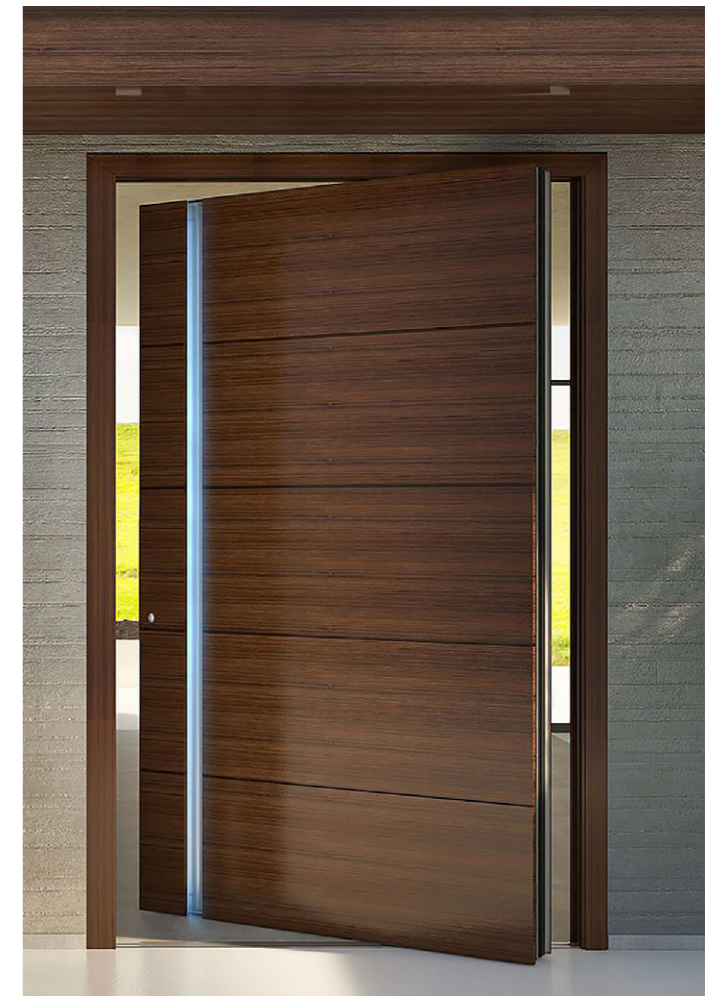
1005



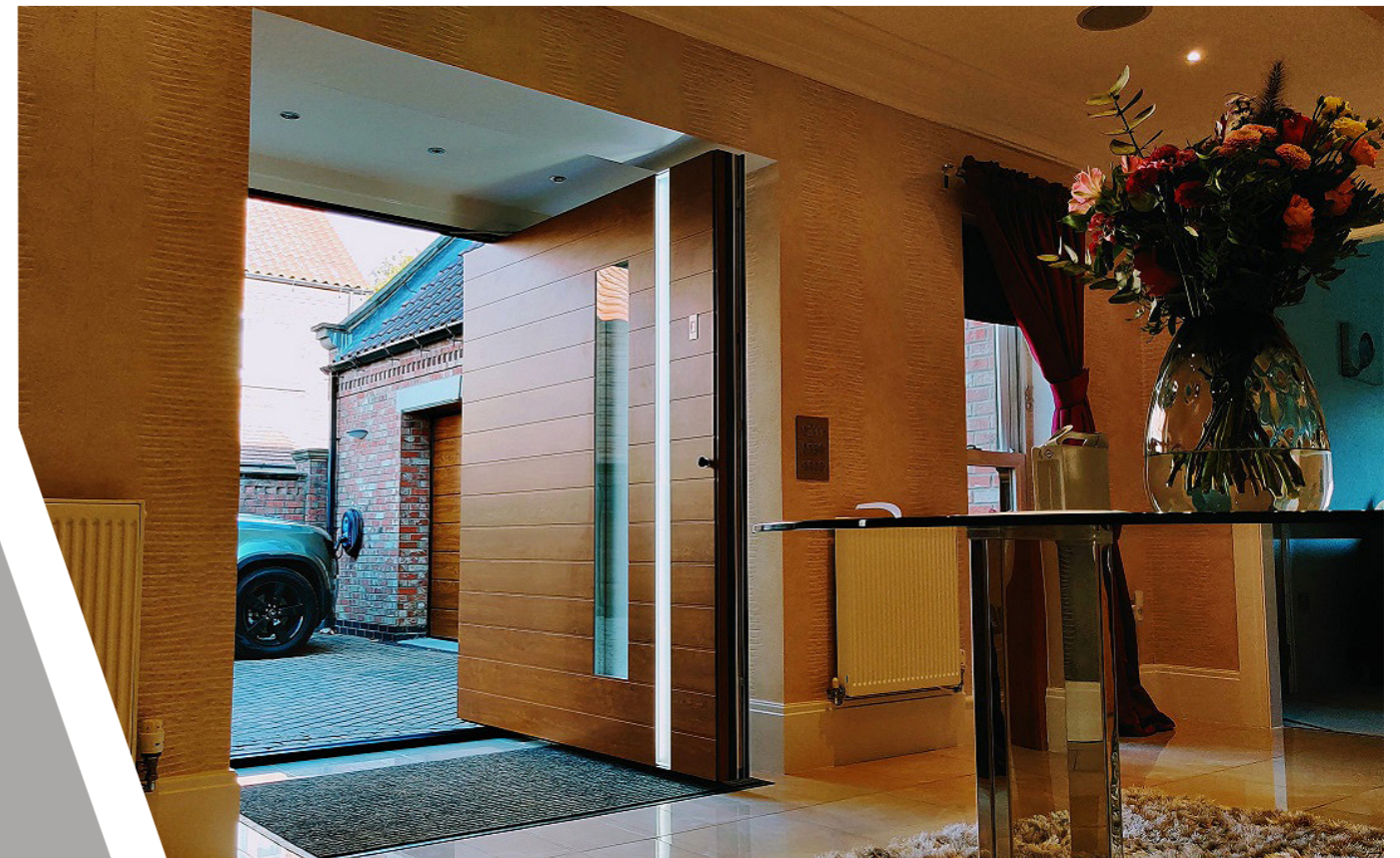
1003



1003-BG



1003





1035



1035



1003

DESIGN OPTIONS

We can make pivot doors from a minimum of 1400mm to a maximum of 2000mm wide, and a maximum of 3000mm high. By special arrangement, we can manufacture Pivot doors up to 4000mm high.

Our pivot threshold is virtually flush at floor level, so it is very important to consider your internal floor finishing material (marble, tile, carpet) before ordering your door. A hidden weatherbar drops down inside the door as it is closing but it is always best to have a non-permeable internal floor material behind a pivot.

Spitfire pivot's can be dressed in exciting finishes, including stainless steel, carbon-fibre effect, aluminium, wood effects, corten or laminated glass.

Double pivot doors are available, as are door and a half configurations, or doors with matching side frames or glazed side elements.

Spitfire pivots can be installed within a Spitfire aluminium curtain wall assembly or into brick, stone or steel.

The thermal performance of our pivot doors will vary slightly by finishing material, but they are always below 1.0 W/m²k, which is way below current Building Regulation requirements.

"Beauty is the harmony
of function and form."

- Alvar Aalto





1014



1014



1012-BG



1016



1019



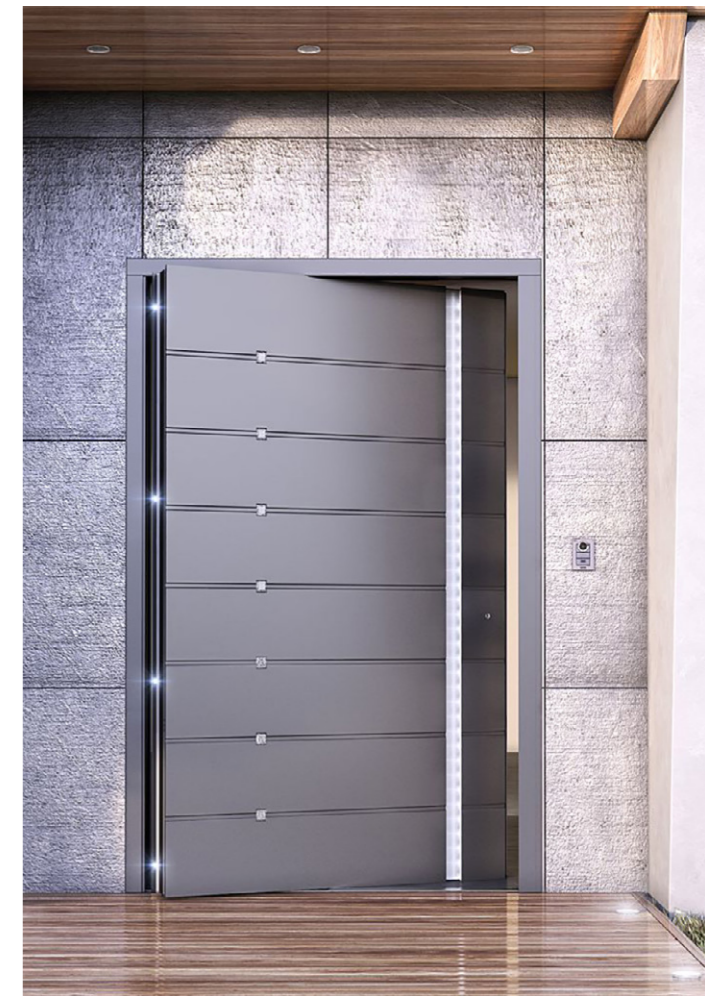
1019



1006



1009



1008

UNIQUE FEATURES

DOOR FRAME

- Our 3mm thick aluminium door frame is 113mm deep (front to back)

DOOR ACCESSORIES

To every Pivot Door, we fit a special recessed handle externally and a lever handle internally. To ensure your Pivot Door closes smoothly, we fit a soft-close door closer unobtrusively in the head of the sash.

We offer the option of including built-in LED lights within the external recessed handle or fitting a vertical line of small LED's down the back of the door sash, only visible when the door is open.

Fingerprint readers are a highly desirable upgrade and of course, we allow you to add Swarovski crystals to most Spitfire pivot doors.

PERFORMANCE

Each Pivot door is slightly different depending on the material you choose, but in general our doors achieve:

- Class 3 Air Tightness
- Class 1A Water Tightness
- C5 Wind Load Resistance
- Soundproof to 34 decibels

"Sometimes, less is more."
- William Shakespeare





1018



1018



1017



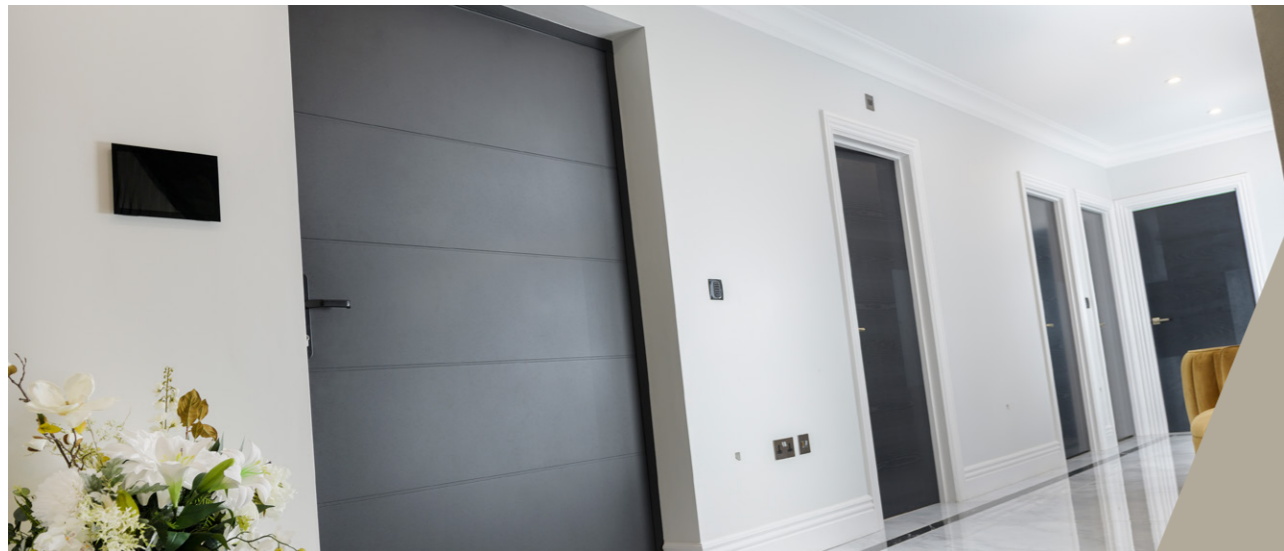
1015



1021



1004



1003



1021

Most of the door designs in this brochure are also available as hinged doors, subject to size limitations.

HOW PIVOT DOORS OPERATE

The pivot is a very simple mechanism which will give many years of trouble-free use because there is so little that can fail. At the top and bottom on the hinge side, is an elongated pin that is embedded in the sash and that pin slots into the outerframe.

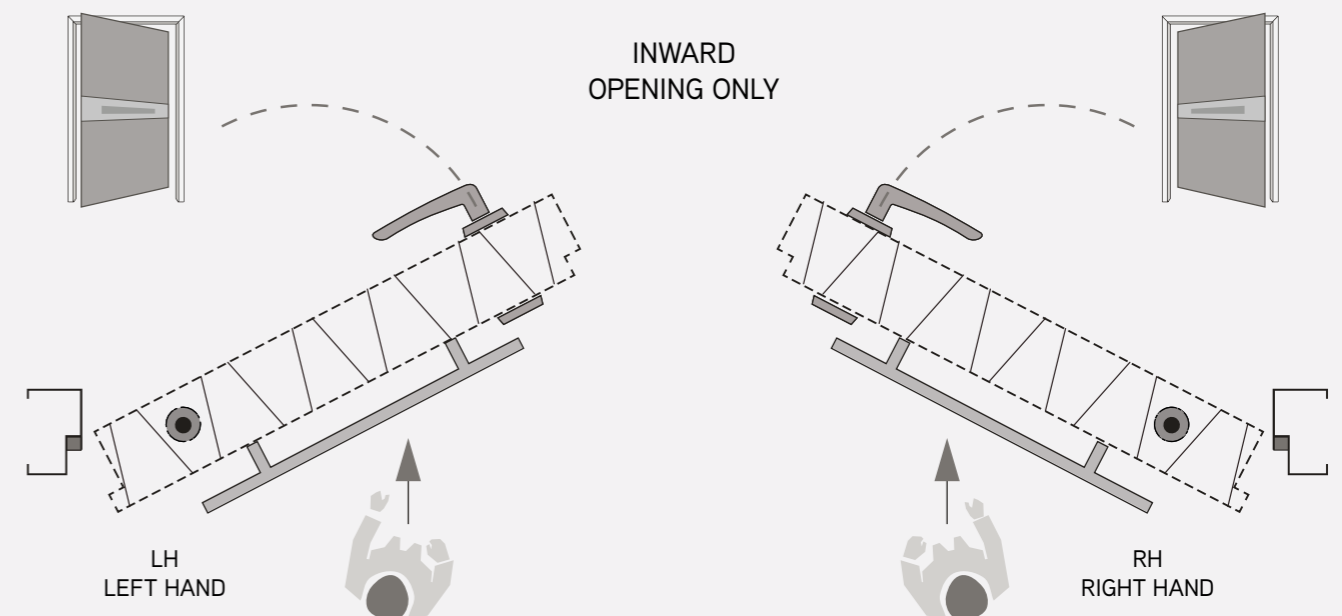
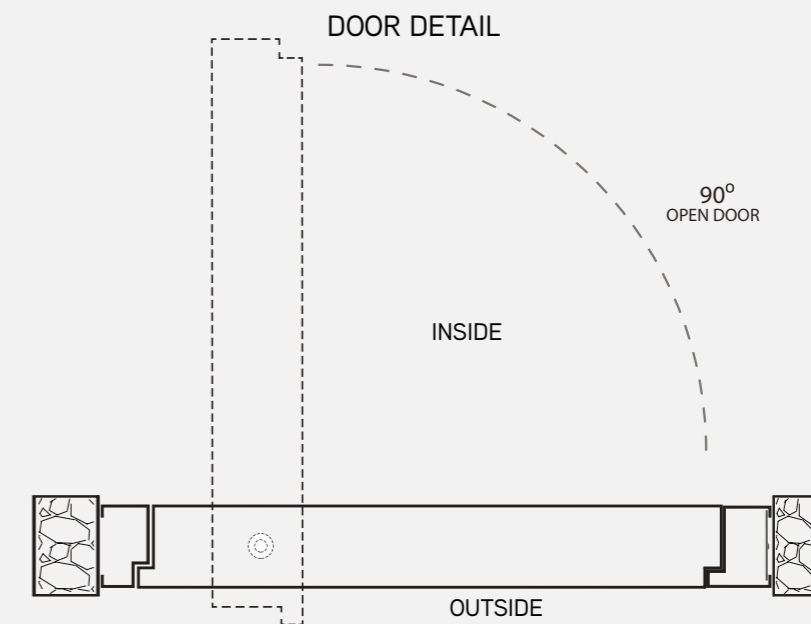
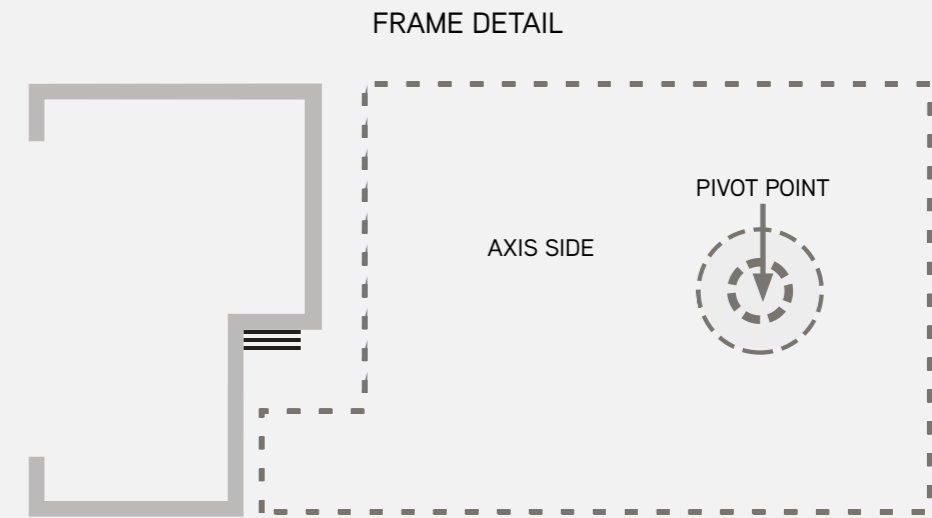
The pivot point is approximately 450mm in from the edge of the door sash, depending on the overall size of the door itself. Surprisingly for such huge doors they are very light to operate, a child can easily open and close them and the concealed door closer will effectively 'soft close' the door.

A weatherbar will drop down under the door as the door closes, to form a seal with the threshold. Due to the almost completely flush detailing at the threshold, when installing a pivot in exposed locations we recommend that a non-permeable floor covering is used inside the door, to cope with potential drops of water ingressing.

REFURBISHMENT AND NEW BUILD

	WIDTH	HEIGHT
MIN.	1400mm	2000mm
MAX.	2000mm	3000mm

*4000mm high doors by special order



S-700 PIVOT DOORS

